



SAY HELLO TO LEGENDARY LOVE! This collection is a whimsical tribute to the well-known, idyllic Blue Willow pattern often seen on china and linens. The legend behind this pattern involves two star-crossed lovers forbidden to be together by her father. Once the two eloped and ran away to be together forever, her father quickly pursued them to keep them apart—when the gods intervened and transformed the couple into lovebirds so they could fly away to live happily ever after. While most Blue Willow is often blue and white, I also wanted to include unexpected hues of olive, lilac, and jade with pops of golden topaz and coral for an eclectic collection with many sophisticated and chic combinations. I hope you enjoy creating your own Legendary Love story with this collection!

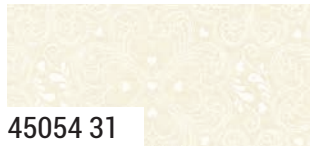
MARCH DELIVERY

♥ LEGENDARY LOVE

by Sarah Thomas of SARIDITTY 



♥ LEGENDARY LOVE by Sarah Thomas of SARIDITTY



45054 31



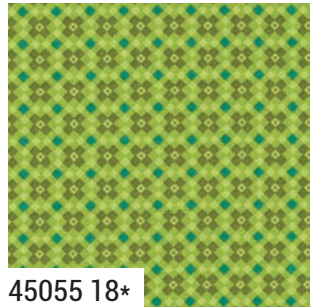
45056 11*



45052 11*



45051 11*



45055 18*



45053 17



45050 17*



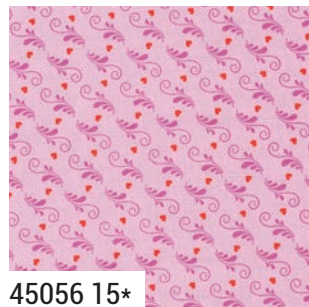
45054 17



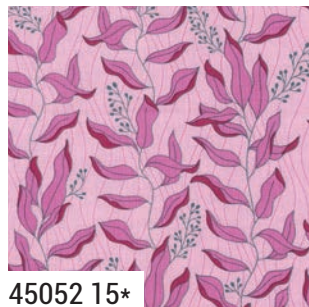
45052 17*



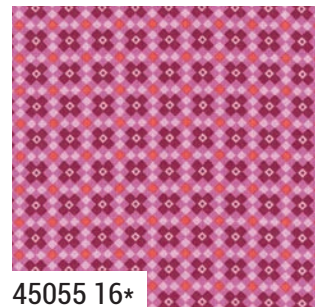
45054 15



45056 15*



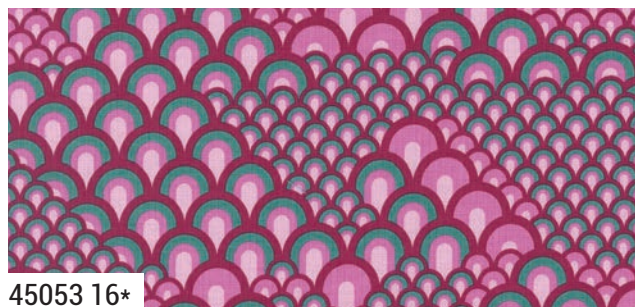
45052 15*



45055 16*



45051 15*



45053 16*

moda MARCH DELIVERY

♥ LEGENDARY LOVE by Sarah Thomas of SARIDITTY



45050 14



45056 14



45052 14*



45051 14*



45053 13*



45054 13*



45050 11*



45051 22



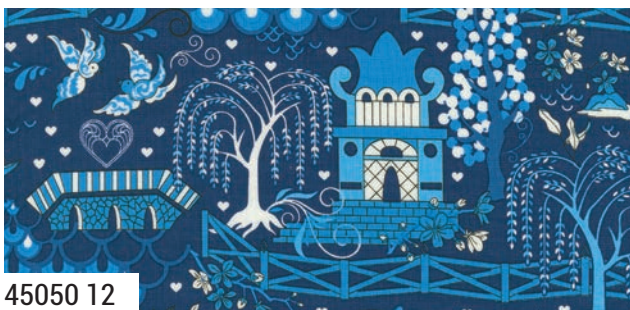
45056 22



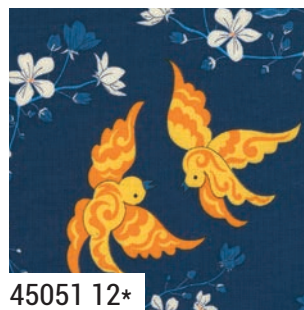
45055 12



45053 12*



45050 12



45051 12*



45054 12*



45056 12*

45050

Asst. 15

Asst. 10

Low Cal 10

AB

JR

LC

MC

PP

MARCH DELIVERY

•30 Prints •100% Premium Cotton

AB includes all 30 skus. JRs, LCs, MCs & PPs include 30 skus with two each of 45053-12 & 13, 45055 & 45056.

projects



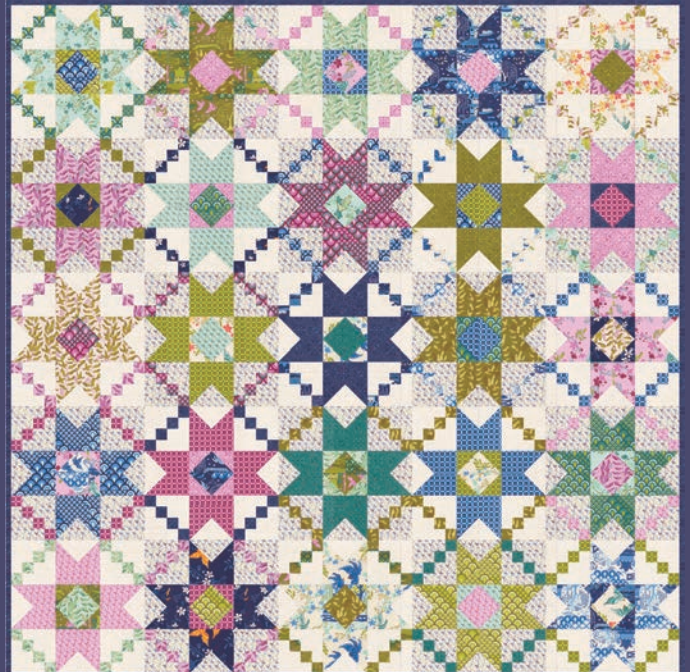
SD 020 Posey Patch 72" x 72"



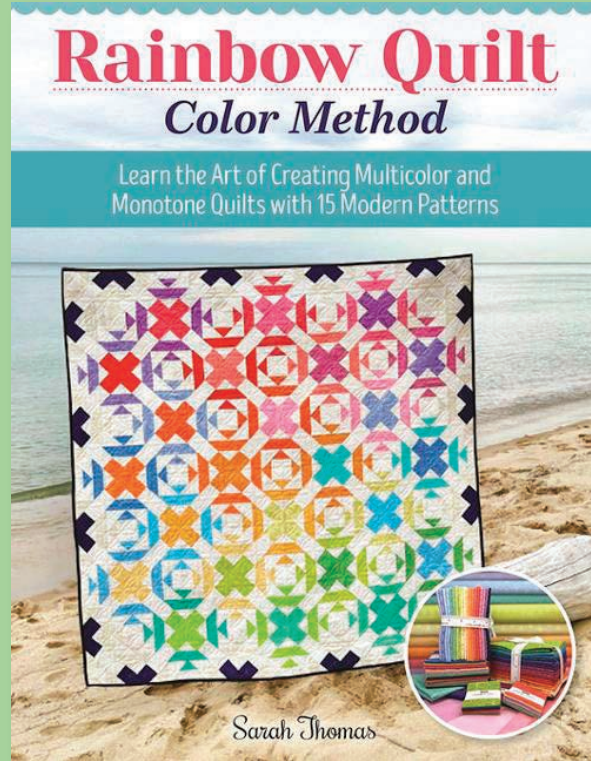
SD 024 Piñata 57" x 76"
LC or PP Friendly



SD 025 Star Crossed Lovers 72" x 72"



SD 026 Juliet 60" x 60"



LAN 512 Rainbow Color Method Book



Ribbon Candy 80" x 100" JR Friendly
from Sarah Thomas' Rainbow Quilt Color Method Book



Ribbon Candy 56" x 70" AB Friendly
from Sarah Thomas' Rainbow Quilt Color Method Book