



Dinah's Delight

1830-1850

Betsy Chutchian

With each collection I create there is a story to tell. Dinah's Delight begins with an antique quilt that was really two finished quilts that had been cut up to create a new quilt in the early 1800s. I was fascinated by the construction, wondering if the quilts were cut apart to hide them from the enemy, or if they were the salvaged parts of damaged quilts.

The name comes from Dinah Crisler Carpenter (1762-1836), my fifth-generation removed great grandmother. Born in Culpeper County, Virginia, Dinah married Samuel Carpenter, who fought alongside their fellow Virginians in the Revolutionary War, and eventually had fourteen children.

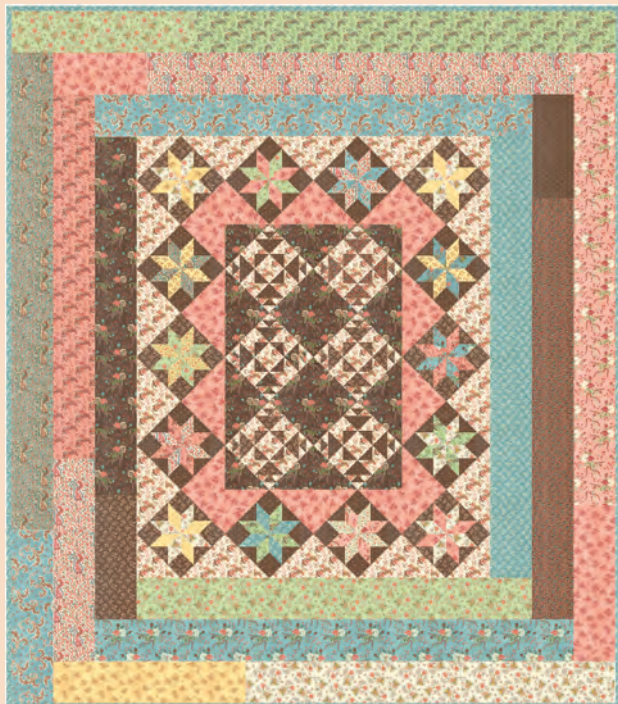
Dinah's Dilemma recreates the magic of the antique quilt, while Gentleness reflects the colonial life of a reverend's wife. I hope this collection of beautiful prints inspires you to tell your story in a quilt.

moda
FABRICS + SUPPLIES®

DECEMBER 2023 DELIVERY



Betsy's antique quilt that inspired her pattern,
Dinah's Dilemma



BCD 1801 Gentleness 58" x 66"



BCD 1802 Dinah's Dilemma F8 Friendly

Dinah's Delight 1830-1850 Betsy Chutchian



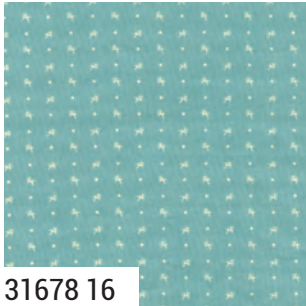
31670 16*



31677 13



31672 13*



31678 16



31674 13*



31671 13



31675 15*



31673 17*



31678 18



31670 18*



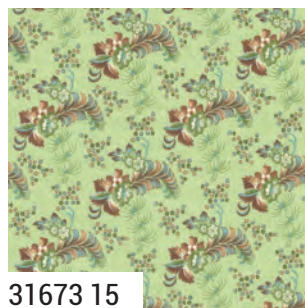
31671 11*



31672 15*



31674 15*



31673 15



31678 17*

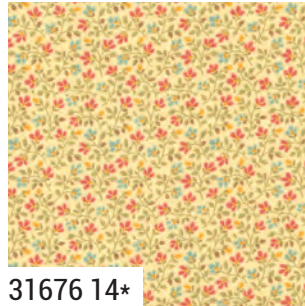
Dinah's Delight 1830-1850 Betsy Chutchian



31678 15



31675 12*



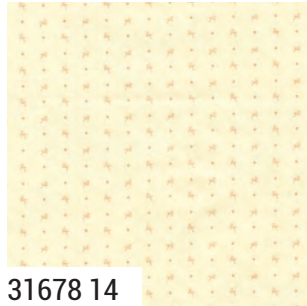
31676 14*



31677 12



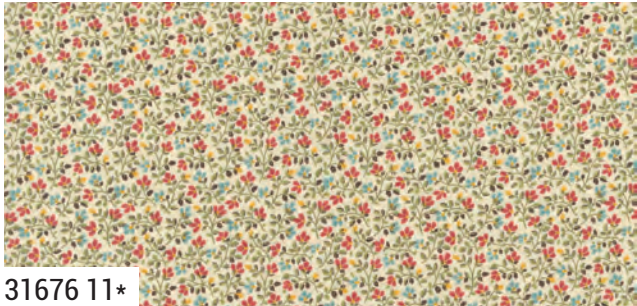
31675 11*



31678 14



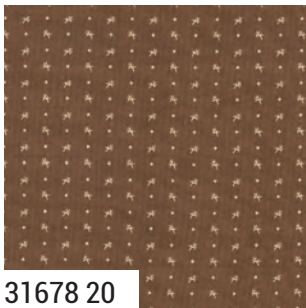
31674 11*



31676 11*



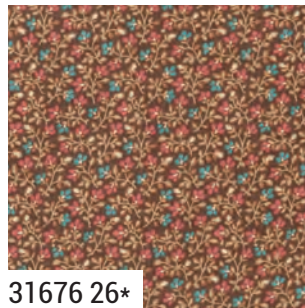
31673 11*



31678 20



31677 17



31676 26*



31672 17*



31670 21*



31671 18*

31670 **Asst. 15** **Asst. 10** **Low Cal 10** **AB** **JR** **LC** **MC** **PP** **DECEMBER DELIVERY**

•30 Prints •100% Premium Cotton
 JRs, LCs, MCs & PPs include 30 skus plus two each of 31670, 31671, 31674-11 and 31676.