



# Sew American!

★ ★ ★ ★ ★ Deb Strain

Three cheers for the red, white and blue! The American flag stands for the best in our country and always evokes a proud and patriotic response. This truly American icon is used in “sew” many ways, helping to make our country's most beloved symbol personal to all. The flag presented in Sew American has the look of being quilted, with different patterns and fabrics in the red stripes. Coordinates reflect those patterns and are perfect for creating projects that celebrate America.

Cream  
19785 11



Cream  
19782 11 \*

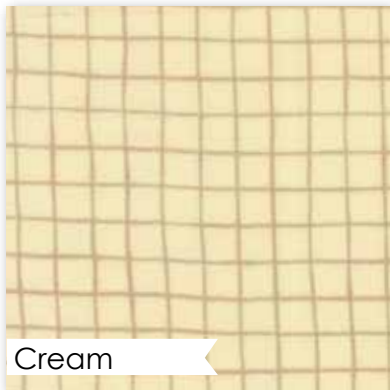


Blue  
19781 13

DESIGNER

FYI

debstrain.blogspot.com



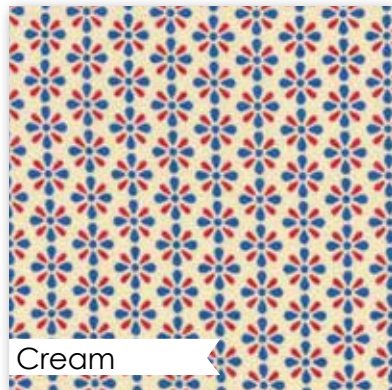
Cream

19787 11



Cream

19781 11 \*



Cream

19784 12 \*



Red

19781 12 \*



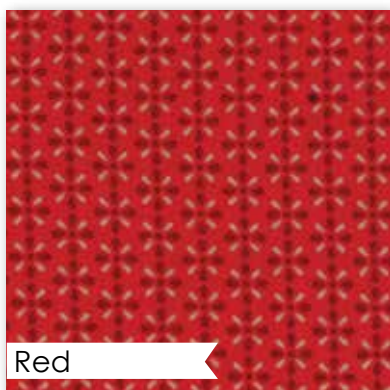
Red

19782 13



Red

19783 12



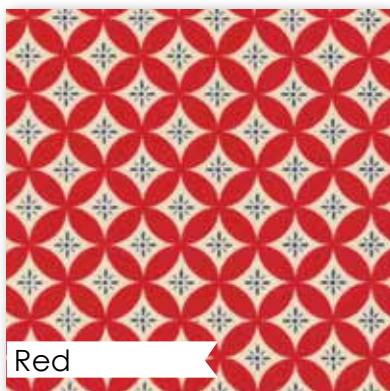
Red

19784 13



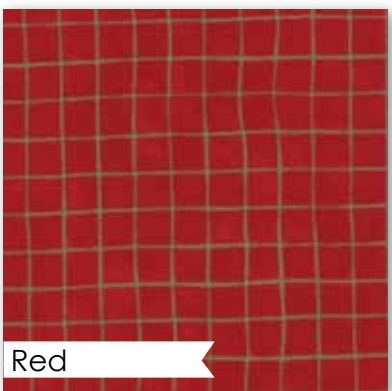
Red

19785 13 \*



Red

19786 11



Red

19787 16

*Traditional Panel* – Measures 24"x45"

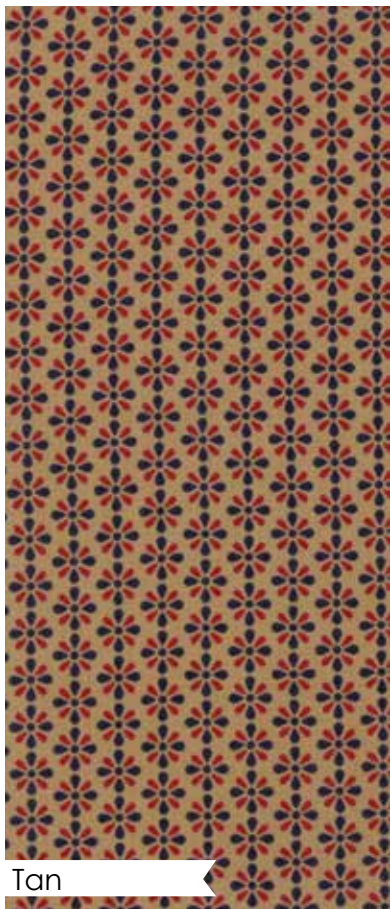
Panel Reduced to show overall pattern



Panel Traditional

19780 12 \*

*"Pledge allegiance to the flag of the United States of America. . ."*



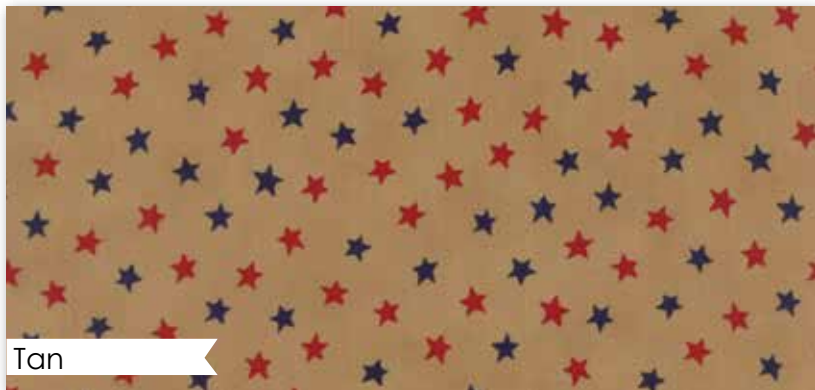
Tan

19784 15



Tan

19781 15 \*



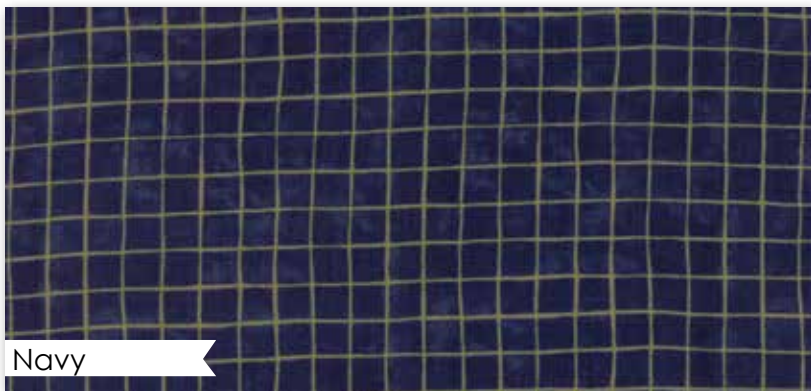
Tan

19782 19 \*



Tan

19783 14



Navy

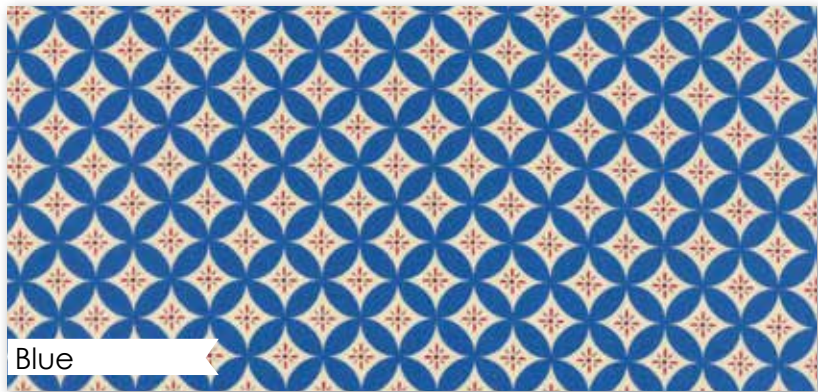
19787 17



Navy

19785 18

**KIT19780/CHD 1622 Proud and Strong** Size: 67½" x 84½"



Blue

19786 12



Navy Blue

19786 14



Blue

19782 15 \*



Blue

19783 13 \*

*Vintage Panel* – Measures 24"x45"

Panel Reduced to show overall pattern



Panel Vintage

19780 13

*...one nation under God with liberty and justice for all!*



*Patriotic Runner*

**CHD 1620/ CHD 1620G**

American Quilter Size: 60" x 24"

19780

Asst. 15

Asst. 10

Low Cal 10

AB

JR

LC

MC

PP

KIT

• 100% Premium Cotton • 25 Prints

AB's include both 18" x 22" Panels. JR's, LC's, MC's & P's do not include Panels.  
JR's, LC's, MC's & P's include two each of 19781, 19782, 19783, 19784 and 19785.

**DELIVERY:  
Dec. 2016**

*moda*