

Size: 53¼" x 65"

FLAG OF VALOR

Fabric and Pattern by Minick and Simpson

Instructions include a ¼" seam allowance.

22" measurement is approximate.

WOF—approximately 40".

Press seams in one direction.

Fabric Requirements

Star Blocks – 6 assorted fat quarters (4 blue / 2 red)

Backgrounds – 6 assorted ½ yards

Red Floral – 1½ yards

Bunting or Star fabric – 1¾ yards

Binding – ⅝ yard

Backing – 3½ yards

Cutting

Star block:

from EACH of 6 blues cut:

1–3½"x 22"

then cut 3–3½"x 3½"

3–2"x 22"

then cut 24–2"x 2"

Background:

from EACH of 6 backgrounds cut:

1–6½"x WOF

then cut 6–6½"x 6½"

cut in half diagonally

2–2"x WOF

then cut 12–2"x 3½"

12–2"x 2"

Red Floral:

(cut length of fabric)

Cut 4–7½"x length of fabric

then cut 4–7½"x 48½"

Binding:

7–2½"x WOF

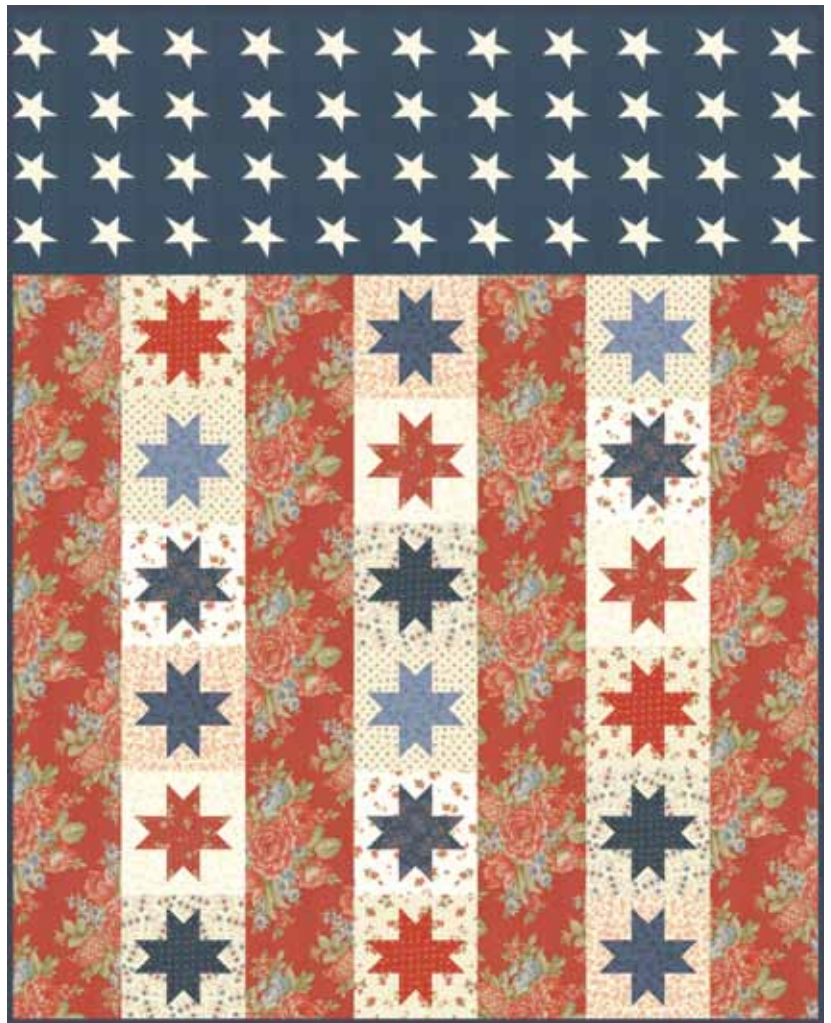
Star fabric or Bunting:

if you are using the Star fabric

cut 1–18¾"x 52"

if you are using the Bunting,

unstitch the hems, press then cut.

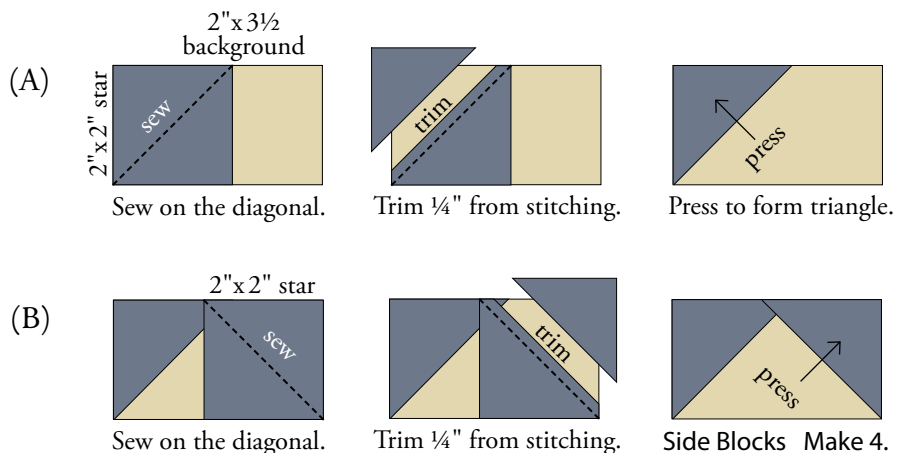


Construction

There are 18 star blocks in the quilt. Each block has a star that is one print and a background that is one print.

Repeat Steps 1 through 3 to make 18 star blocks.

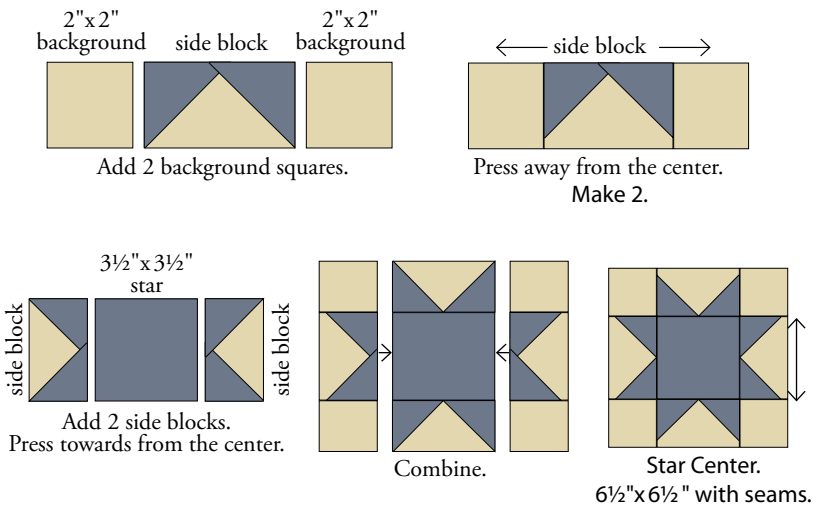
1. Draw diagonal lines of the back of 8–2"x 2" print squares for the star.
(A) Layer one 2" square and 1–2"x 3½" background rectangle right sides together. *See diagram for placement.* Sew on the diagonal line. Trim the square ¼" from the sewn line then press to the corner to form a triangle. (B) Layer an additional 2" square on the same rectangle. *See diagram for placement.* Sew on the diagonal line. Trim the square ¼" from the sewn line then press to the corner to form a triangle. Repeat to make 4 side blocks.



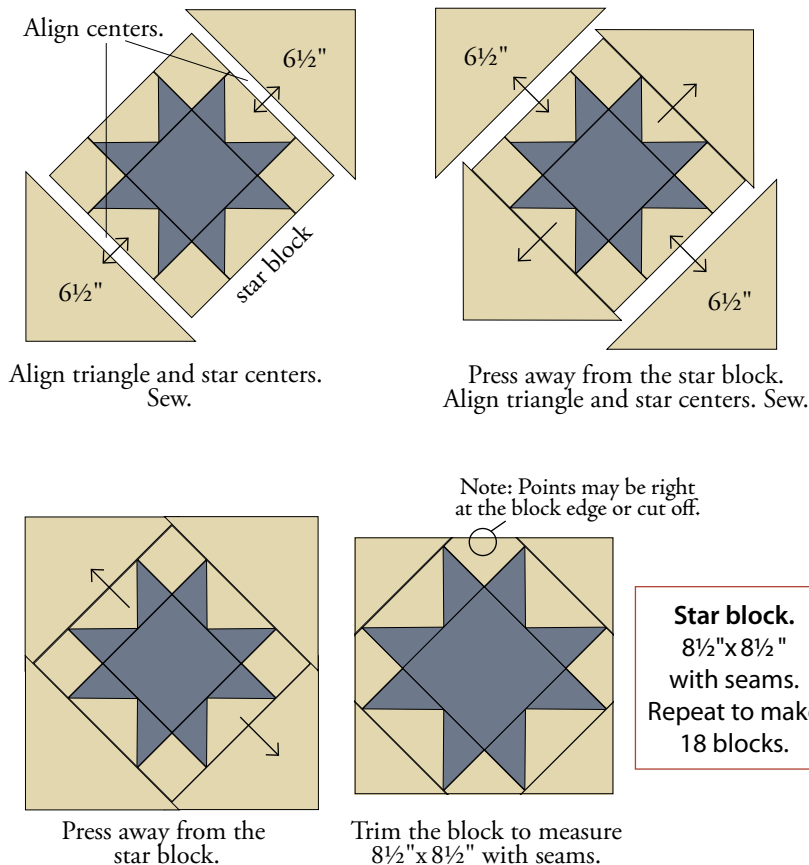
moda

Construction cont.

2. Add 2-2"x2" background squares the side blocks.
Make 2. Sew 2 side blocks to 1-3½"x3½" print to make the star center. Combine all the units to make the star center.

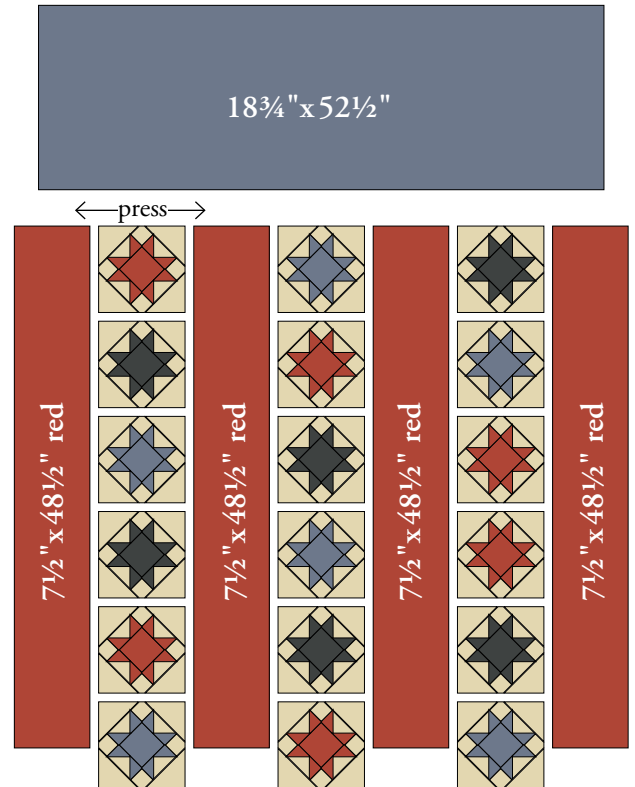


- 3 Add 2-6½" background triangles to the sides of the star block. Press away from the star. *The triangles are oversized. Finger press the triangle and the star block in half to find their centers. Align the centers when sewing together.* Add another 2-6½" background triangles. Press away from the star. Trim the block to measure 8½"x8½".

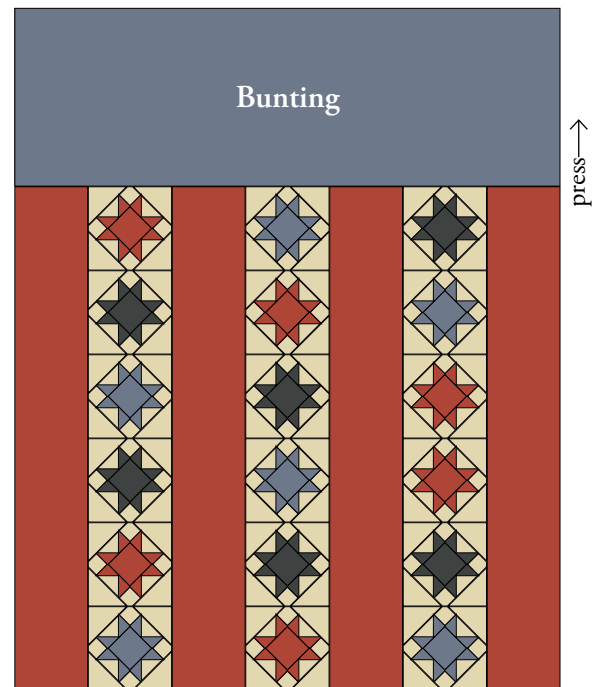


Assemble Quilt

4. Assemble three columns of 6 stars. Add the 7½"x48½" red floral strips. Press away from the star columns. Add the bunting.



5. Sew the 7-2½" binding strips together. Layer, quilt, bind to complete quilt.



Finished quilt is approximately 53¼"x65".

moda