

LUMIERE  
DE NOEL

FROM:  
FRENCH GENERAL

13529 41\*



13543 12\*



13542 11\*



13543 11



13544 11\*



13524 42\*



13541 12\*





13542 12



13521 55\*



13521 41



13524 41



13541 11\*



13540 12\*



13544 12\*



13540 11



13529 44\*





13524 45



13544 15\*



13521 47\*



13543 15



13530 26\*





13540 15



13530 16\*



13542 15\*

90% COTTON / 10% LINEN



12554 18



12554 19



12554 20



# SILKY COTTON



12554 16



12554 17



12554 13



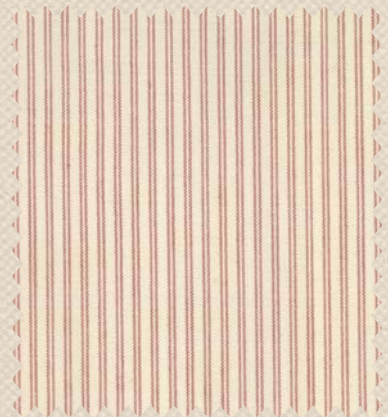
12554 15



12554 11



12554 14



12554 12





12554 21 DOBBY DOT



13541 15\*



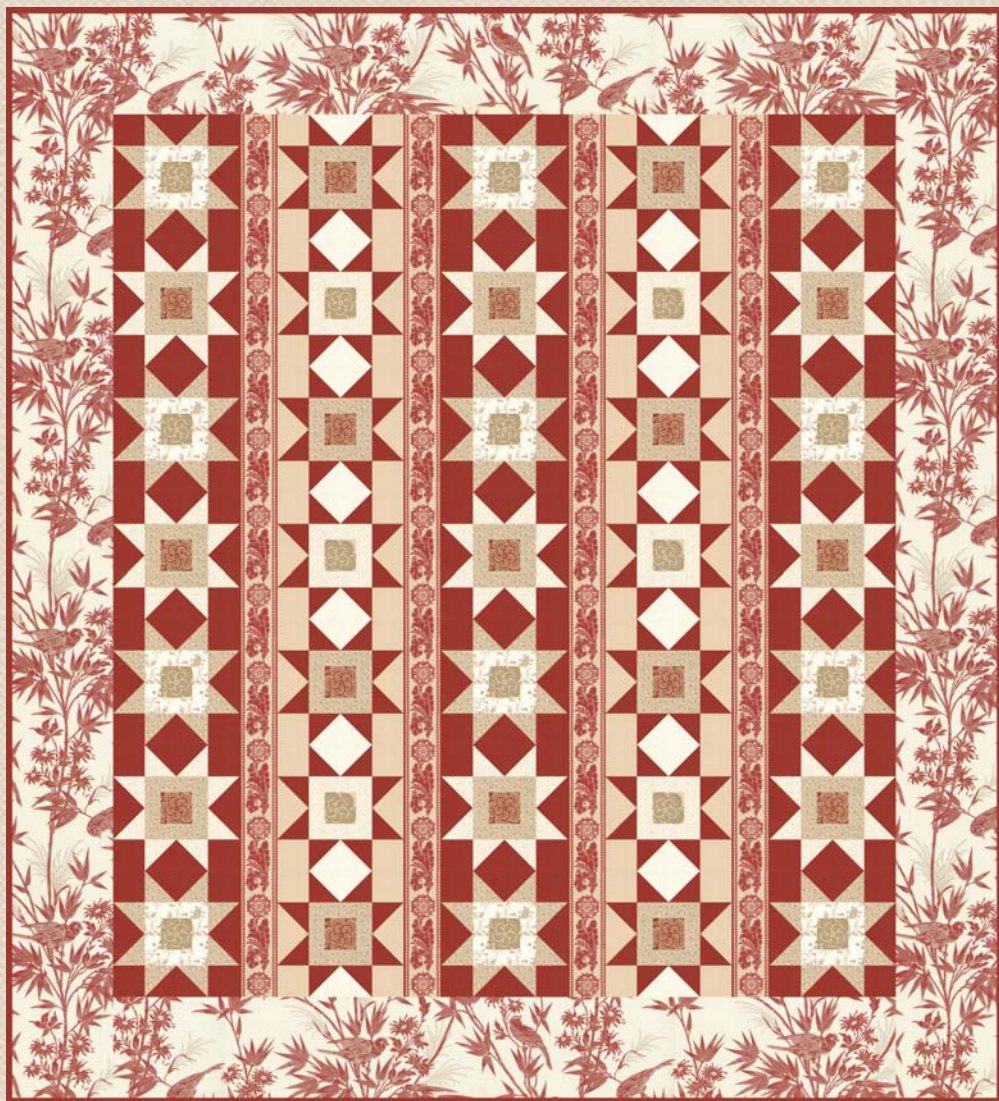
13521 43



13529 42



13521 42



PS13540 PROJECT SHEET LUMIERE DE NOEL 78" x 86"  
DESIGNED BY SUSAN STIFF, MADE BY DEBBIE DUCKWORTH





13540 14



13542 14

**Delivery**

**Printed**

44" - 45" 100% Cotton Prints: 34  
44" - 45" Wovens: 11

Asst. 13540-15 15 yards of each  
Asst. 13540-10 10 yards of each  
Asst. 13540-10H 10 yards of 17 skus\*  
Asst. 12554-12 12 yards of each

13540AB Bundle: 34 Skus  
13540JR Jellyroll: 2½" Strips-Multi. 4  
13540LC Layercake: 10" Squares-Multi. 4  
13540PP Charm Pack: 5" Squares-Multi. 12

*JR's, LC's, and PP's include 2 each of 13544 & 13529-41 & 44.*



13544 14



13524 44



13543 14



13541 14





A



### A. Reversible Tree Skirt

Front:

Printed 85% cotton / 15% linen

Back:

Solid 85% cotton / 15% linen

Covered button closure. 55" wide

#982-19 Pack 1

### B. Stocking

Printed 85% cotton / 15% linen

18" long

#982-17 Pack 1



B



C

### C. Advent Calender

85% cotton / 15% linen front with embroidered numbers and antique metal chain for wall display. Back is printed 85% cotton / 15% linen.

20"W x 17"L

#982-18 Pack 1

### D. Trims

Choose from 3 yards (pack 6) on antique spool (as shown) or 25 yards (pack 1) on printed board. 5 Styles.

2109-82 1" Stitch (3 yds)

2109-83 1/2" Reversible Dot (3yds)

2109-84 1/2" Stripe (3 yds)

2109-85 1/2" Woven "je t'aime" (3 yds)

2109-86 Solid Grosgrain (3 yds)

2109-87 1" Stitch (25 yds)

2109-88 1/2" Reversible Dot (25 yds)

2109-89 1/2" Stripe (25 yds)

2109-90 1/2" Woven "je t'aime" (25 yds)

2109-91 Solid Grosgrain (25 yds)



D

