

moda



Lancaster

Jo Morton

Finished size: 72" x 72"

Lancaster

by Jo Morton

moda

Finished size: 72"x72"

Quilters Basics

Read instructions before beginning a project.

All instructions include a 1/4" seam allowance.

Press as you go.

WOF = Width of Fabric

Lancaster, this beautiful quilt of rich autumn colors, is pieced and assembled in a unique way – not with typical blocks, but with assorted pieced units that are joined into rows. For ease of piecing and assembly sort the cut pieces into groups labeled 1-17 for each of the 17 different units needed to complete this quilt. Some units will require cuts from only 1 fabric while other units will require cuts from 3 or 4 different fabrics.

Examples: Fabric 1 is cut into 20-4½" squares to be used in Unit 5. Place all cut pieces are placed in the Unit 5 group. Fabric 2 is cut into different sizes for use in Units 7 and 16. Place these pieces in Unit 7 and 16 groups respectively. Continue cutting and sorting as you go along.

Cutting



Fabric 1– 38081-13 – ½ yd.

Used in Unit 5

Cut 3 – 4½"xWOF strips
From the strips cut 20 – 4½"x4½" squares **U5**



Fabric 2– 38081-17 – ½ yd.

Used in Units 7 and 16

Cut 1 – 4⅞"xWOF strips
From the strip cut 8 – 4⅞"x4⅞" squares **U7**
Cut 1 – 4½"xWOF strip
From the strip cut 8 – 4½"x4½" squares **U16**



Fabric 3– 38082-19 – ⅞ yd.

Used in Units 1, 3 and 13

Cut 3 – 2½"xWOF strips
From 2 strips cut 18 – 2½"x4½" rectangles **U3**
From the third strip cut 2 – 2½"x4½" rectangles **U3** and 4 – 2½"x2½" squares **U1**
Cut 4 – 4½"xWOF strips
From the strips cut 32 – 4½"x4½" squares **U13**



Fabric 4– 38083-11 – ⅓ yd.

Used in Units 8, 9 and 10

Cut 2 – 2½"xWOF strips
From the strips cut 12 – 2½"x4½" rectangles **U9**
and 4 – 2½"x2½" squares **U8**
Cut 1 – 4½"xWOF strip
From the strip cut 4 – 4½"x4½" squares **U10**



Fabric 5 – 38083-13 – 1⅞ yds.

Used in Units 11, 12 and 13

Cut 8 – 4½"xWOF strips
From the strips cut
16 – 4½"x4½" squares **U11**,
16 – 4½"x4½" squares **U12** and
16 – 4½"x8½" rectangles **U13**

moda

Cutting— cont.



Fabric 6 – 38083-14 – $\frac{7}{8}$ yd.
Used in Units 4, 8, 9 and 10

Cut 3 – $4\frac{1}{2}$ "xWOF strips
From the strips cut 20 – $4\frac{1}{2}$ "x $4\frac{1}{2}$ " squares **U4**,
From the remainder cut 6 – $2\frac{7}{8}$ "x $2\frac{7}{8}$ " squares, **U9**
Cut 1 – $2\frac{7}{8}$ "xWOF strip
From the strip cut
4 – $2\frac{7}{8}$ "x $2\frac{7}{8}$ " squares, **U8**
and 6 – $2\frac{7}{8}$ "x $2\frac{7}{8}$ " squares, **U9**
Cut 4 – $2\frac{1}{2}$ "xWOF strips
From the strips cut 24 – $2\frac{1}{2}$ "x $2\frac{1}{2}$ " squares **U9**
and 32 – $2\frac{1}{2}$ "x $2\frac{1}{2}$ " squares **U10**



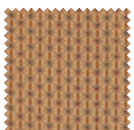
Fabric 7– 38084-15 – FQ
For Unit 14

Cut 4 – $8\frac{1}{2}$ "x $8\frac{1}{2}$ " squares **U14**



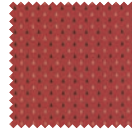
Fabric 8 – 38084-19 – $1\frac{5}{8}$ yds.
Used in Unit 5, 8, 15 and Binding

Cut 5 – $2\frac{1}{2}$ "xWOF
From the strips cut 40 – $2\frac{1}{2}$ "x $4\frac{1}{2}$ "
rectangles **U5**
Cut 13 – $2\frac{1}{2}$ "xWOF
From the 5 strips cut 80 – $2\frac{1}{2}$ "x $2\frac{1}{2}$ "
squares **U5**
Set the remaining 8 strips aside
for binding
Cut 1 – $8\frac{1}{2}$ "xWOF
From the strip cut
1 – $8\frac{1}{2}$ "x $8\frac{1}{2}$ " square **U15**
and 4 – $4\frac{1}{2}$ "x $4\frac{1}{2}$ " squares **U8**



Fabric 9– 38085-13 – $\frac{3}{4}$ yd.
For Unit 2

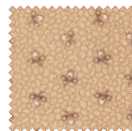
Note: fabric is directional
Cut 5 – $4\frac{1}{2}$ "xWOF strips
From the strips cut 80 – $4\frac{1}{2}$ "x $2\frac{1}{2}$ " rectangles **U2**



Fabric 10– 38086-15 – $1\frac{1}{2}$ yds.
Used in Unit 2, 4, 5, 11, 17

Note: fabric is directional

Cut 15 – $2\frac{1}{2}$ "xWOF strips
From the strips cut 240 – $2\frac{1}{2}$ "x $2\frac{1}{2}$ " squares
(80 **each** for **U2**, **U4** and **U5**)
Cut 1 – $4\frac{1}{2}$ "xWOF
From the strip cut 8 – $4\frac{1}{2}$ "x $4\frac{1}{2}$ " squares **U17**
Cut 1 – $8\frac{1}{2}$ "xWOF
From the strip cut 4 – $8\frac{1}{2}$ "x $8\frac{1}{2}$ " squares **U11**



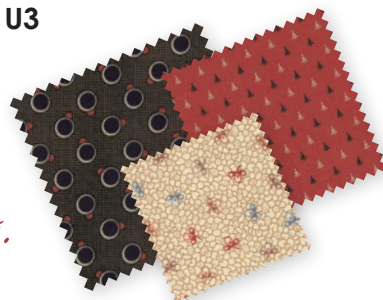
Fabric 11– 38087-12 – $2\frac{5}{8}$ yds.
Used in Units 1, 2, 3, 6, 7, 8, 9, 10, 12, 16 and 17

Cut 17 – $2\frac{1}{2}$ "xWOF strips
From 6 strips cut 48 – $2\frac{1}{2}$ "x $4\frac{1}{2}$ " rectangles (20) for **U3**,
(12) for **U9**, and (16) for **U10**
From the 11 remaining strips cut 168 – $2\frac{1}{2}$ "x $2\frac{1}{2}$ " squares
(4) **U1**, (80) **U2**, (40) **U3**, (4) **U8**, (24) **U9**, and (16) **U10**
Cut 3 – $2\frac{7}{8}$ "xWOF strips
From the strips cut a total of 40 – $2\frac{7}{8}$ "x $2\frac{7}{8}$ " squares
(4) **U1**, (20) **U3**, (4) **U8** and (12) **U9**
Cut 6 – $4\frac{1}{2}$ "xWOF strips
From 4 strips cut a total of 16 – $4\frac{1}{2}$ "x $8\frac{1}{2}$ " rectangles
(8) **U12**, (4) **U16** and (4) **U17**
From the 2 remaining strips cut
16 – $4\frac{1}{2}$ "x $4\frac{1}{2}$ " squares **U6**
Cut 1 – $4\frac{7}{8}$ "xWOF strips
From the strip cut 8 – $4\frac{7}{8}$ "x $4\frac{7}{8}$ " squares **U7**



Fabric 12– 38088-16 – $\frac{1}{2}$ yd.
Used in Units 1 and 3

Cut 3 – $2\frac{1}{2}$ "xWOF strips
From the strips cut a total of 40 – $2\frac{1}{2}$ "x $2\frac{1}{2}$ "
squares for **U3**
Cut 2 – $2\frac{7}{8}$ "xWOF strips
From the strips cut a total of 24 – $2\frac{7}{8}$ "x $2\frac{7}{8}$ " squares
(4) **U1** and (20) **U3**



Expect nothing and appreciate everything.

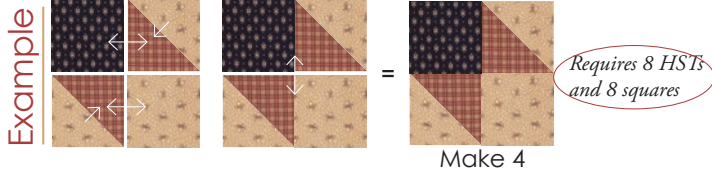
Piecing Techniques

All of the units for this quilt are made using one or all of the following piecing techniques. Follow the directions on this page as you piece the units.

The fabrics used and the quantity of cuts needed are listed with piecing diagrams for each unit.

Note: The dimensions given in the steps here are examples only. Use the pieces from each labeled group as you sew the numbered units.

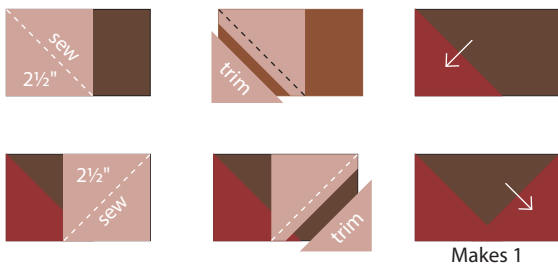
Unit 1 – Make 4 – $4\frac{1}{2}'' \times 4\frac{1}{2}''$ with seams
(Use F3, F11, F12)



Flying Geese

For Units 3, 5, 9, 10, 12, 13, 16, 17

- (A) Using a mechanical pencil draw a diagonal line on the wrong side of the $2\frac{1}{2}''$ squares.
- (B) With right sides together align edges and stitch one $2\frac{1}{2}''$ square on the diagonal to $1-4\frac{1}{2}'' \times 2\frac{1}{2}''$ background rectangle. On the outside edge of the sewn line trim away the bottom of the square leaving a $\frac{1}{4}''$ seam allowance. Do not trim away the background rectangle. Press to the corner to form a triangle. Add another marked $2\frac{1}{2}''$ square to the opposite side of the rectangle. Stitch, trim and press as before.

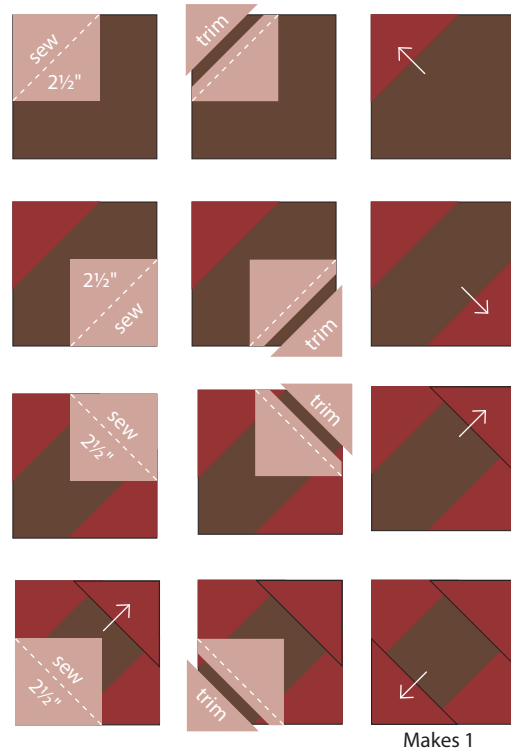


Stitch'n Flip Corners

For Units 2, 4, 5, 11

- (A) Using a mechanical pencil draw a diagonal line from corner to corner on the wrong side of the $2\frac{1}{2}''$ squares.
- (B) With right sides together align edges and stitch one $2\frac{1}{2}''$ square on the diagonal to $1-4\frac{1}{2}'' \times 4\frac{1}{2}''$ square. On the outside edge of the sewn line trim away the bottom of the square only leaving a $\frac{1}{4}''$ seam allowance. Do not trim away the background square. Press to the corner to form a triangle.

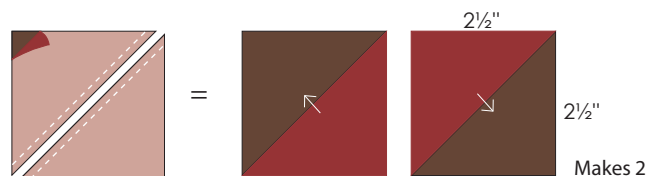
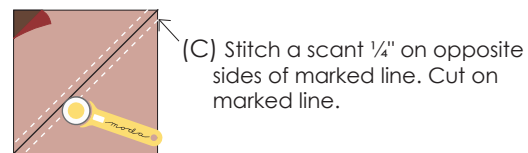
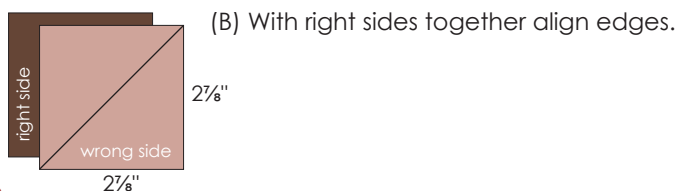
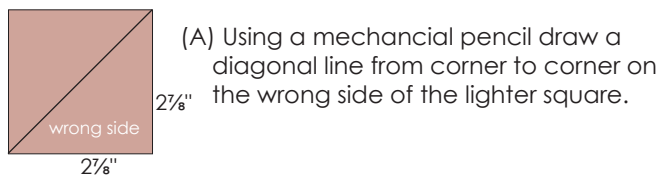
Repeat steps to add additional corners to the background square as directed in the unit construction.



moda

Half Square Triangles-HSTs

For Units 1, 3, 7, 8, 9



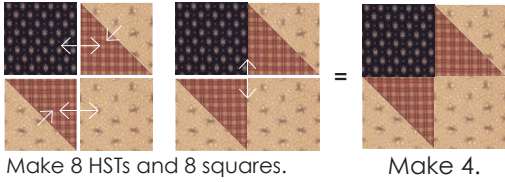
- (D) Press toward darker triangle. Trim units to measure $2\frac{1}{2}''$ with seams.

Construction

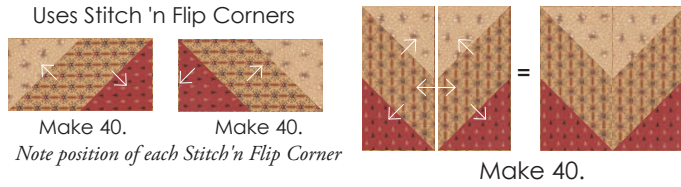
Pressing Guide

- ↔ Press seam open
- ↗ Press toward arrow

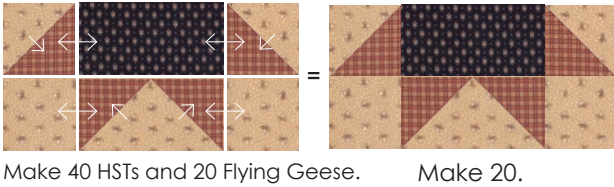
Unit 1 – Make 4 – 4½" x 4½" with seams
Use Fabrics F3, F11, F12 Used in Row 1



Unit 2 – Make 40 – 4½" x 4½" with seams
Use Fabrics F9, F10, F11 Used in Rows 1, 2, 3B Left, 3B Right, 4 and 6



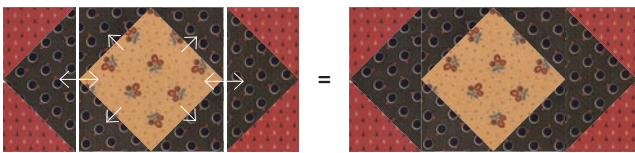
Unit 3 – Make 20 – 4½" x 8½" with seams
Use Fabrics F3, F11, F12 Used in Rows 1, 3, 5 and 7



Unit 4 – Make 20 – 4½" x 4½" with seams
Use Fabrics F6, F10 Used in Rows 2, 4 and 6



Unit 5 – Make 20 – 4½" x 8½" with seams
Use Fabrics F1, F8, F10 Used in Rows 2, 3, 5 and 7



Make 20 center squares and 40 flying geese. Note: F10 is directional.

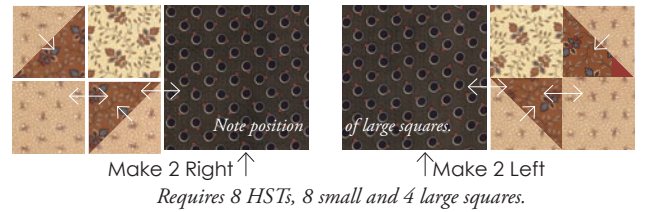
Unit 6 – Need 16 – 4½" x 4½" with seams
Use Fabric F11 – no piecing Used in Rows 4 and 6



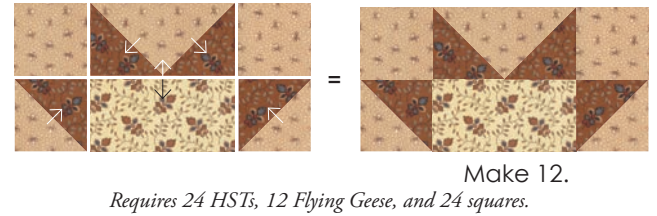
Unit 7 – Make 16 – 4½" x 4½" with seams
Use F2, F11 Used in Rows 3C Left, 3C Right, 4 and 6



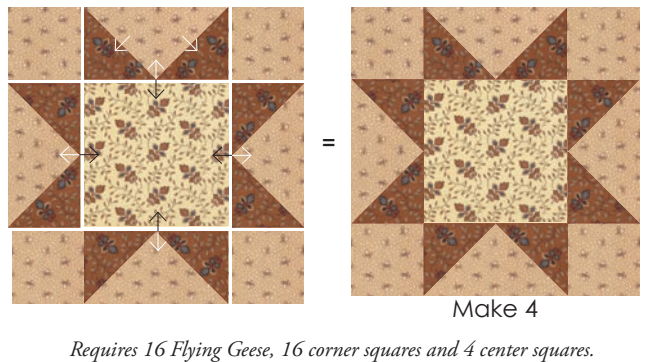
Unit 8 – Make 4 – 4½" x 8½" with seams
Use F4, F6, F8, F11 Used in Rows 3C Left and 3C Right



Unit 9 – Make 12 – 4½" x 8½" with seams
Use F4, F6, F11 Used in Rows 3B Left, 3B Right and 5

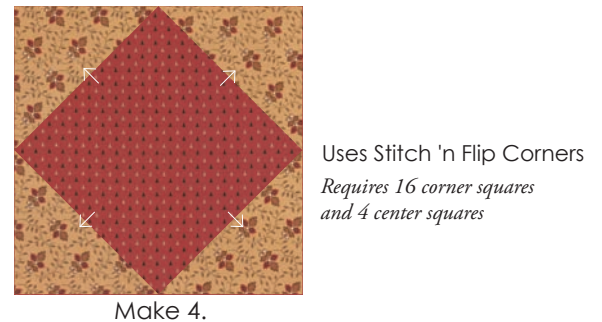


Unit 10 – Make 4 – 8½" x 8½" with seams
Use F4, F6, F11 Used in Rows 3A and 7

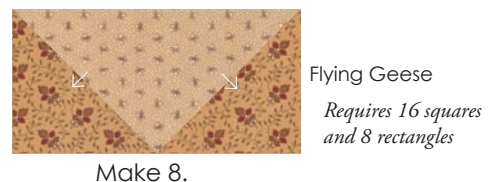


moda

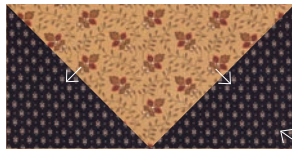
Unit 11 – Make 4 – 8½" x 8½" with seams
Use F5, F10 Used in Rows 5 and 7



Unit 12 – Make 8 – 4½" x 8½" with seams
Use F5, F11 Used in Rows 3C Left, 3C Right and 5



Unit 13 – Make 16 – 4½" x 8½" with seams
Use F3, F5 Used in Rows 4, 5 and 6

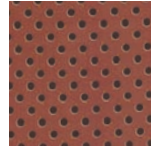


Flying Geese
Make 16.

NOTE: Fabric is directional.

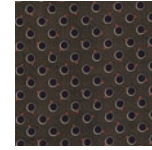
Requires 32 squares and 16 rectangles.

Unit 14 – Need 4 – 8½" x 8½" with seams
Use F7– no piecing Used in Row 5



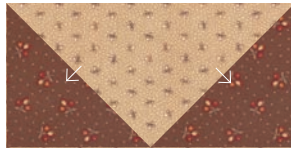
Need 4 .

Unit 15 – Need 1 – 8½" x 8½" with seams
Use F8– no piecing Used in Row 7



Need 1.

Unit 16 – Make 4 – 4½" x 8½" with seams
Use F2, F11 Used in Rows 4 and 7



Flying Geese
Make 4.

Requires 8 squares and 4 rectangles.

Unit 17 – Make 4 – 4½" x 8½" with seams
Use F10, F11 Used in Rows 6 and 7



Flying Geese
Make 4.

Requires 8 squares and 4 rectangles.

Quilt Assembly

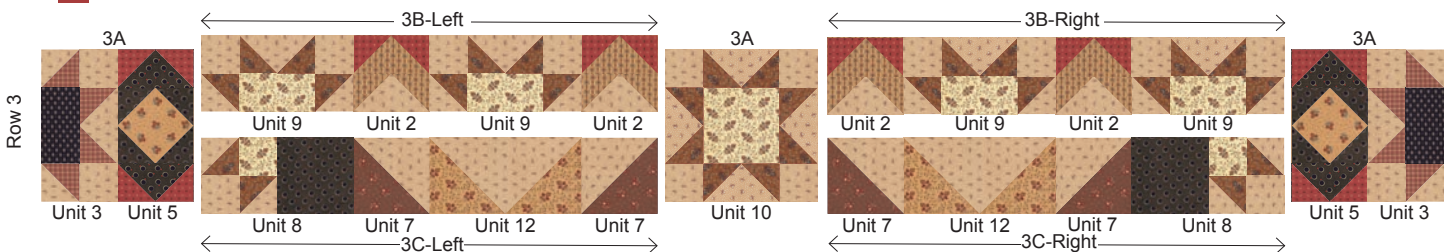
1. After piecing the units, sort them into groups as needed for each row...ROW 1, ROW 2, etc.
2. Refer to diagrams on page 6 to assemble each row. Refer to Row 3 instructions below. Make 2 each of rows 1-6. Press seams open.
3. Make 1 Row 7. Press seams open.

Row 3

Step 1– Assemble 3B-Left and Right and 3C-Left and Right units first. Join 3B Left and 3C Left together. Press seam open. Repeat with 3B Right and 3C Right.

Step 2– Sew units 3 and 5 together to make 3A units. Press seams open.

Step 3 – Combine units from Steps 1 & 2 to complete 2 Row 3s. Press seams open.



4. Stitch 2 sets of Rows 1-6. Press seams open.
5. Add Row 7 in numerical order to 1 set of Row 6. Press seams open.
6. Rotate second set of Rows 1-6 and stitch Row 6 to the bottom of Row 7 to complete the quilt. Press seams open.

Quilt top should measure 72½" x 72½" with seams.

Finishing

1. Using a diagonal seam, join binding strips end to end. Press seams open. Fold prepared strip in half wrong sides together and press to make the binding.

2. Layer, Quilt, and Bind

moda

Quilt Assembly (cont.)

Make 2 each of Rows 1– 6 and 1 Row 7



moda
 Lancaster Jo Morton

PS38080

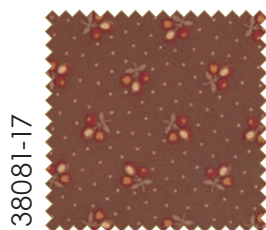
Finished size: 72"x72"

Fabric Requirements

Fabric 1 ½ yd.



Fabric 2 ½ yd.



Fabric 3 ⅞ yd.



Fabric 4 ⅓ yd.



Fabric 5 1⅞ yds.



Fabric 6 ⅞ yd.



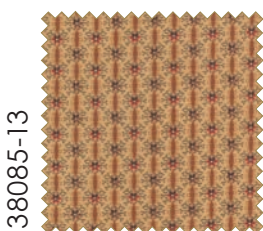
Fabric 7 FQ



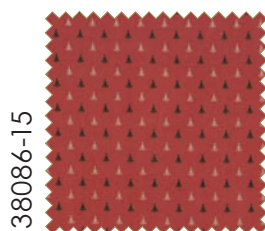
Fabric 8 1⅞ yds.



Fabric 9 ¾ yd.



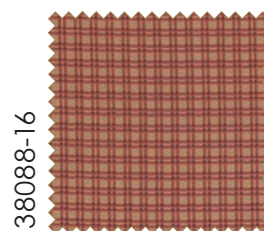
Fabric 10 1½ yd.



Fabric 11 2⅝ yds.



Fabric 12 ½ yd.



Backing – 5½ yds.

***Lancaster** provides beautiful prints for traditional and reproduction quilts, including madder reds and golds that give life to the 19th century browns, blacks and neutrals. These fabrics feature lovely florals, a cool little dot print and a great “momma bear” stripe that’s not too big, not too small, that’s just right. There are also leaves and buds, a few interesting background prints and a sweet small check that’s perfect for traditional quilts.*

Expect nothing and appreciate everything.



MODAFABRICS.COM
 PS38080 — SUGGESTED RETAIL \$10.00